

Ekonomska škola Vukovar

Date: 14.09.2020

Operator: Nova-lux d.o.o.



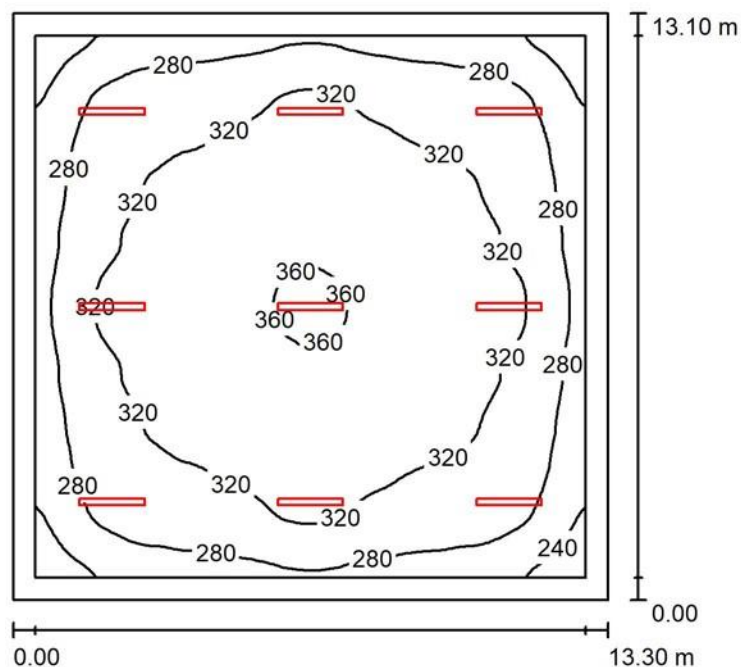
Operator Nova-lux d.o.o.
 Telephone
 Fax e-
 Mail

Table of contents

Ekonomska škola Vukovar

Project Cover	1
Table of contents	2
Škola_Mala dvorana_D103 Summary	2
Luminaire parts list	3
Luminaires (layout plan)	5

Škola_Mala dvorana_D103 / Summary



Height of Room: 5.500 m, Mounting Height: 5.000 m, Light loss factor: 0.80

Values in Lux, Scale 1:169

Surface	ρ [%]	E_{av} [lx]	E_{min} [lx]	E_{max} [lx]	u_0
Workplane	/	309	205	366	0.662
Floor	20	274	171	335	0.624
Ceiling	70	90	67	120	0.744
Walls (4)	50	179	89	274	/
Workplane:		UGR	Lengthways-	Across	to luminaire axis



Operator Nova-lux d.o.o.
Telephone
Fax e-
Mail

Height: 0.800 m Left Wall 24 23
Grid: 128 x 128 Points Lower Wall 23 22
Boundary Zone: 0.500 m (CIE, SHR = 0.25.)

Illuminance Quotient (according to LG7): Walls / Working Plane: 0.588, Ceiling / Working Plane: 0.291.

Luminaire Parts List

No.	Pieces	Designation (Correction Factor)	□ (Luminaire) [lm]	□ (Lamps) [lm]	P [W]
1	9	LED,industrial,body PC with aluminium cooler,diffuser translucent PC (1.000)	9617	9620	71.0
Total: 86549			Total: 86580	639.0	

Specific connected load: $3.67 \text{ W/m}^2 = 1.19 \text{ W/m}^2/100 \text{ lx}$ (Ground area: 174.23 m^2)

Škola_Mala dvorana_D103 / Luminaire parts list

9 Pieces

LED,industrial,body PC with aluminium cooler,diffuser translucent PC Article No.:

Luminous flux (Luminaire): 9617 lm

Luminous flux (Lamps): 9620 lm

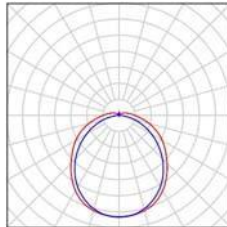
Luminaire Wattage: 71.0 W

Luminaire classification according to CIE: 94

CIE flux code: 45 74 92 94 100

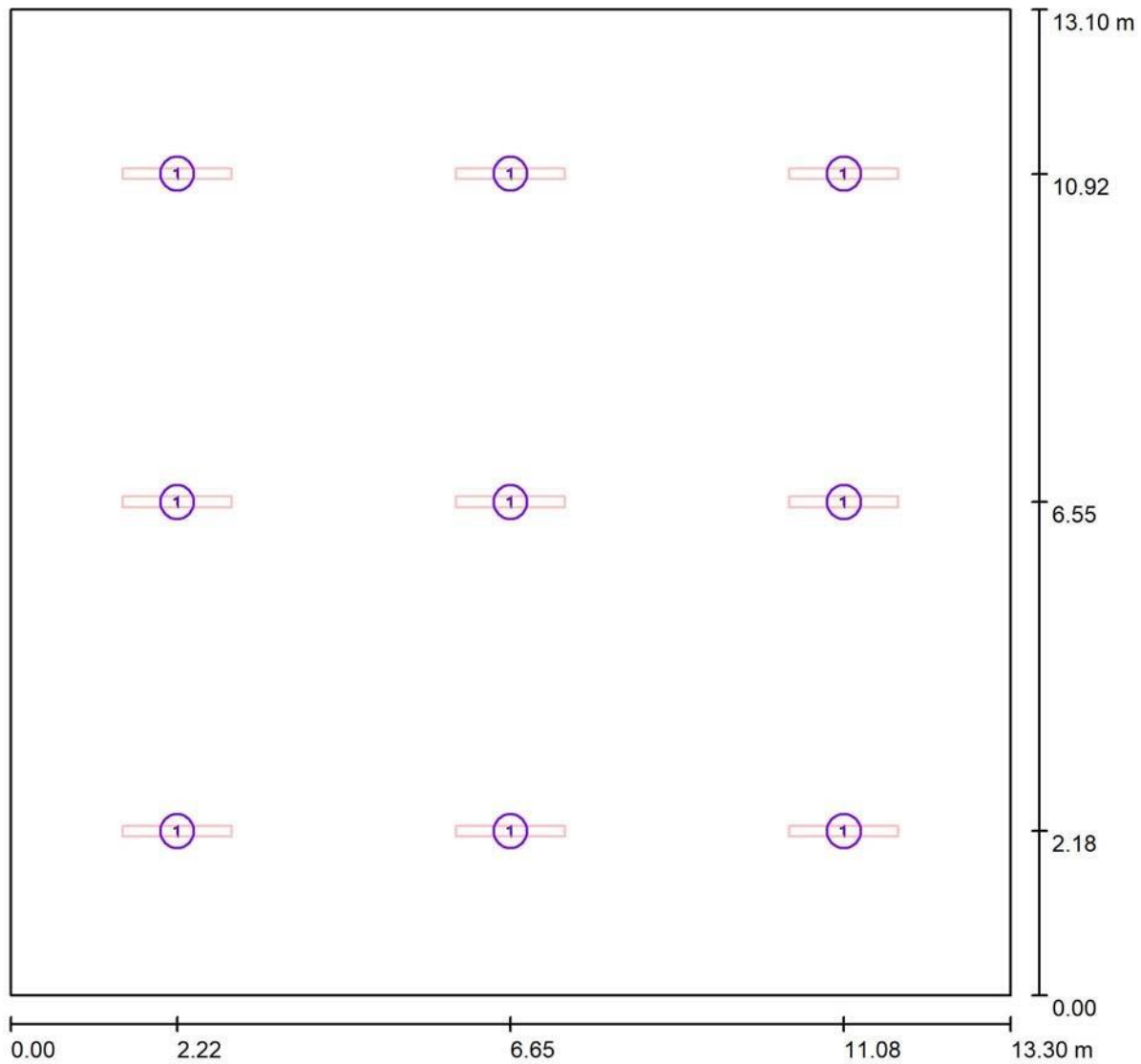
Fitting: (Correction Factor 1.000).

See our luminaire catalog for image of the luminaire.



an

Škola_Mala dvorana_D103 / Luminaires (layout plan)



Scale 1 : 96

Luminaire Parts List

No.	Pieces	Designation
1	9	<div style="background-color: black; width: 300px; height: 1.2em; display: inline-block;"></div> LED,industrial,body PC with aluminium cooler,diffuser
		<div style="background-color: black; width: 100px; height: 1.2em; display: inline-block;"></div>